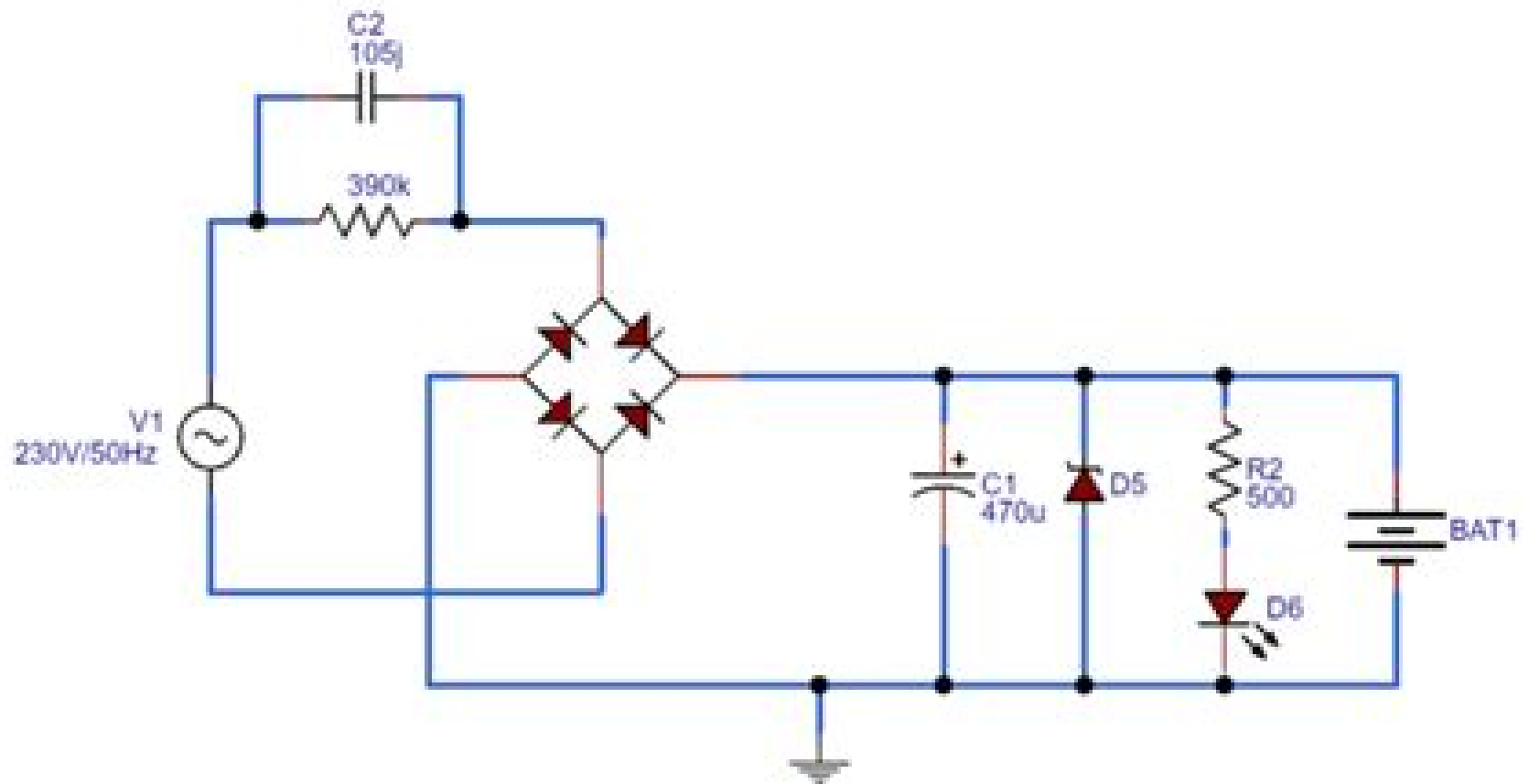


# 4V Battery Charger



For Complete Details Visit :  
[www.Circuits-DIY.com](http://www.Circuits-DIY.com)

# 4v Battery Charger Schematic

**M Mark**



#### **4v Battery Charger Schematic:**

*Direct and General Support Maintenance Manual ,1989* , **DS and GS Maintenance Manual ,1969**

**Operator's, Organizational, Direct Support, and General Support Maintenance Manual, Including Repair Parts and Special Tools List (including Depot Maintenance Repair Parts and Special Tools List) ,1990 Manuals**

**Combined: 150+ U.S. Army Navy Air Force Marine Corps Generator Engine MEP APU Operator, Repair And Parts Manuals** , Over 36 000 total pages Just a SAMPLE of the CONTENTS by File Number and TM Number 013511 TM 5 6115 323 24P 4 GENERATOR SET GASOLINE ENGINE DRIVEN SKID MOUNTED TUBULAR FRAME 1 5 K SINGLE PHASE AC 120 240 V 28 VDC LESS ENGINE DOD MODELS MEP 015A 60 HZ NSN 6115 00 889 1446 AND DOD MODEL MEP 025A 28 VDC 6115 00 017 8236 TO 35C2 3 385 4 SL 4 07609A 07610A 013519 TM 5 6115 329 25P 1 GENERATOR SET GASOLINE ENGINE DR LESS ENGINE 0 5 KW AC 120 240 V 60 HZ 1 PHASE DOD MODEL FSN 6115 923 4469 400 HZ MODEL MEP 019A 6115 940 7862 AN DC MODEL MEP 024A 6115 940 7867 TO 35C2 3 440 14 013537 TM 5 6115 457 12 7 GENERATOR SET ENGINE DRIVEN TACTICAL SKID MTD 100 KW 3 PHASE 4 WIRE 120 240 416 V DOD MODELS MEP 007A UTILITY CLASS 50 60 HZ NSN 6115 00 133 9101 MODEL MEP 106A PRECISE CLASS 50 60 H 6115 00 133 9102 MODEL MEP 116A PRECISE CLASS 400 KW 6115 00 133 9103 INCLUDING OPTIONAL KITS MODEL MEP 007 AWF WINTERIZATION KIT FUEL BURNING 6115 00 463 9082 MEP 007AWE WINTERIZATION KIT ELECTRIC 6115 00 463 9084 MODEL MEP 007A DUMMY LOAD KIT 6115 00 463 9086 AND MODEL MEP 007AWM WHEEL 013538 TM 5 6115 457 34 12 GENERATOR SET DIESEL ENGINE DRIVEN TACTICAL SKID 100 KW 3 PHASE 4 WIRE 120 208 AND 240 416 V DOD MODELS MEP0 UTILITY CLASS 50 60 HZ NSN 6115 00 133 9101 MODEL MEP106A CLASS 50 60 HZ 6115 00 133 9102 AND MODEL MEP116A PRECISE 400 HZ 6115 00 133 9103 INCLUDING OPTIONAL KITS DOD MODELS MEP007AWF WINTERIZATION KIT FUEL BURNING 6115 00 463 9082 MEP007AWE WINTERIZATION KIT ELECTRIC 6115 00 463 9084 MOD MEP007ALM DUMMY LOAD KIT 6115 00 463 9086 AND MODEL MEP007A MOUNTING KIT 6 013540 TM 5 6115 458 24P 9 GENERATOR SET DIESEL ENGINE DRIVEN TACTICAL SKID MTD 2 KW 3 PHASE 4 WIRE 120 208 AND 240 416 VOLTS DOD MODELS MEP009A UTILITY CLASS 50 60 HZ NSN 6115 00 133 9104 AND MODEL MEP108A PRECISE CLASS 50 60 HZ 6115 00 935 8729 INCLUDING OPTIONAL K DOD MODELS MEP009AWF WINTERIZATION KIT FUEL BURNING 6115 00 403 3761 MODEL MEP009AWE WINTERIZATION KIT ELECTRIC 6115 00 489 7285 013545 TM 5 6115 465 12 19 GENERATOR DIESEL ENGINE DRIVEN TACTICAL SKID MTD 30 KW 3 PHASE 4 WIRE 120 208 AND 240 416 V DOD MODEL MEP 005A UTILITY CLASS 50 6 NSN 6115 00 118 1240 MODEL MEP 104A PRECISE CLASS 50 60 6115 00 118 1247 MODEL MEP 114A PRECISE CLASS 400 HZ 6115 00 118 1248 INCLUDING AUXILIARY EQUIPMENT DOD MODEL MEP WINTERIZATION KIT FUEL BURNING 6115 00 463 9083 MODEL MEP WINTERIZATION KIT ELECTRIC 6115 00 463 9085 MODEL MEP 005A LOAD BANK KIT 6115 00 463 9088 AND MODEL MEP 005AWM WH 013547 TM 5 6115 465 34 12

GENERATOR SET DIESEL ENGINE DRIVEN TACTIC SKID MTD 30 KW 3 PHASE 4 WIRE 120 208 AND 240 416 V DOD MO  
MEP 005A UTILITY 50 60 HZ NSN 6115 00 118 1240 MODEL MEP 104A PRECISE 50 60 HZ 6115 00 118 1247 MODEL MEP  
114 PRECISE 50 60 HZ 6115 00 118 1248 INCLUDING OPTIONAL KITS MODEL MEP 005AWF WINTERIZATION KIT FUEL  
BURNING 6115 00 463 MODEL MEP 005AWE WINTERIZATION KIT ELECTRIC 6115 00 463 908 MODEL MEP 005ALM  
LOAD BANK KIT 6115 00 463 9088 MODEL MEP WHEEL MOUNTING KIT 6115 00 013548 TM 5 6115 545 12 18  
GENERATOR DIESEL ENGINE DRIVEN TACTICAL SKID MTD 60 KW 3 PHASE 4 WIR 120 208 AND 240 416 VOLTS DOD  
MODEL MEP 006A UTILITY CLASS 5 NSN 6115 00 118 1243 DOD MODEL MEP 105A PRECISE CLASS 50 60 6115 00 118  
1252 DOD MODEL MEP 115A PRECISE CLASS 400 HZ 6115 00 118 1253 INCLUDING OPTIONAL KITS DOD MODEL  
MEP006AWF WINTERIZATION KIT FUEL BURNING 6115 00 407 8314 DOD MODEL MEP006AWE WINTERIZATION KIT  
ELECTRIC 6115 00 455 7693 DOD M MEP006ALM LOAD BANK KIT 6115 00 407 8322 DOD MODEL MEP006 013550 TM 5  
6115 545 34 12 INTERMEDIATE FIELD DIRECT AND GENERAL SUPPORT AND DEPOT MAINTENANCE MANUAL FOR  
GENERATOR SET DIESEL ENGINE DRIVEN TAC SKID MTD 60 KW 3 PHASE 4 WIRE 120 208 AND 240 416 VOLTS DOD  
MODELS MEP 006A UTILITY CLASS 50 60 HZ FSN 6115 118 1243 MEP 105A PRECISE CLASS 50 60 HZ 6115 118 1252  
AND MEP 115A PRECISE CLASS 400 HZ 6115 118 1253 TO 35C2 3 444 2 NAVFAC P 8 626 34 TM 00038G 35 015378 TM 5  
6115 323 14 10 GENERATOR GASOLINE ENGINE DRIVEN SKID MOUNTED TUBULAR FRAME 1 5 KW SI PHASE AC 120  
240 V 28 V DC LESS ENGINE DOD MODELS MEP 01 60 HZ NSN 6115 00 889 1446 AND MODEL MEP 025A 28 V DC 6115  
00 017 8236 TO 35C2 3 385 1 015380 TM 5 6115 332 24P 3 GENERATOR GASOLINE ENGINE AIR COOLED 5 KW AC 120  
240 V SINGLE PHASE 120 208 V 3 PHASE SKID MOUNTED TUBULAR FRAME LESS ENGINE M DESIGN 60 HZ DOD  
MODEL MEP 017A NSN 6115 00 017 8240 400 DOD MODEL MEP 022A 6115 00 017 8241 TO 35C2 3 424 24 020611 LO 5  
6115 457 12 GENERATOR SET DIESEL ENGINE DRIVEN SKID MTD 100 KW 3 PHASE 120 208 AND 240 416 V DOD  
MODELS MEP 007A UTILITY CLASS 50 NSN 6115 00 133 9101 MODEL MEP 106A PRECISE CLASS 50 60 H 6115 00 133  
9102 AND MODEL MEP 116A PRECISE CLASS 400 HZ 6115 00 133 9103 020612 LO 5 6115 458 12 GENERATOR SET  
DIESEL ENGINE DRIVEN SKID MTD 200 KW 3 PHASE 4 WIRE 120 208 416 VOLTS DOD MODELS MEP 009A UTILITY  
CLASS 50 60 HERTZ NSN 6115 00 133 9104 MEP 108A PRECISE CLASS 50 HERTZ 6115 00 935 8729 LO 07536A 12  
020614 LO 5 6115 465 12 GENERATOR SET DIESEL ENGINE DRIVEN TACTICAL SKID MOUNTED 30 3 PHASE 4 WIRE 120  
206 AND 240 416 V DOD MODEL MEP 055A UT CLASS 50 60 HZ NSN 6115 00 118 1240 MODEL MEP 104A PRECI CLASS  
50 60 HZ 6115 00 118 1247 AND MODEL 114A PRECISE CLA 400 HZ 6115 00 118 1248 025150 TM 5 6115 271 14 12  
GENERATOR SET GASOLINE ENGINE DRIVEN S MTD TUBULAR FRAME 3 KW 3 PHASE AC 120 208 AND 120 240 V 2 DC  
LESS ENGINE DOD MODEL MEP 016A 60 HZ NSN 6115 00 017 823 MODEL MEP 016C 60 HZ 6115 00 143 3311 MODEL  
MEP 021A 400 HZ 6115 00 017 8238 MODEL MEP 021C 400 HZ 6115 01 175 7321 MODEL MEP 026A DC HZ 6115 00 017

8239 MODEL MEP 026C 28 V DC 6115 01 175 7320 TO 35C2 3 386 1 TM 05926A 14 NAVFAC P 8 6 025151 TM 5 6115 271  
24P 3 GENERATOR SET GASOLINE ENGINE DRIVEN SKID MOUNTED TUBULA FRAME 3 KW 3 PHASE AC 120 208 AND  
120 240 VOLTS 28 VDC LE ENGINE DOD MODEL MEP 016A 60 HERTZ NSN 6115 00 017 8237 MEP 021A 400 HERTZ 6115  
00 017 8238 MEP 026A 28 VDC HERTZ 6115 00 017 8239 MEP 016C 60 HERTZ 6115 01 143 3311 MEP 400 HERTZ 6115  
01 175 7321 MEP 026C 28 VDC HERTZ 6115 01 175 7320 TO 35C2 3 386 4 SL 4 05926A 032507 TM 5 6115 275 14 10  
GENERATOR SET GASOLINE ENGINE DRIVEN SKID MOUNTED TUBULAR FRAME 10 KW AC 120 208V PHASE AND 120  
240V SINGLE PHASE LESS ENGINE DOD MODELS MEP HZ NSN 6115 00 889 1447 AND MEP 023A 400 HZ 6115 00 926  
08 NAVFAC P 8 615 14 TO 35C2 3 452 1 THIS ITEM IS INCLUDED ON EM 0086 EM 0088 D MEP 018A UTILITY CLASS 60  
HZ NSN 6115 00 889 1447 AND MEP 0 PRECISE CLASS 400 HZ 6115 00 926 0843 NAVFAC P8 615 24P TO 35C2 3 452 4  
THIS ITEM IS INCLUDED ON EM 0086 EM 0088 1 PHASE 3 WIRE 3 PHASE 4 WIRE 120 120 240 AND 120 208 V DOD  
MODEL MEP 002A UTILITY CLASS 60 HZ NSN 6115 00 465 1044 NAVFAC P 8 622 12 TO 35C2 3 456 1 TM 05682C 12  
032640 TM 5 6115 585 12 12 GENERATOR SET DIESEL ENGINE DRIVEN TACTICAL SKID MTD 10 KW 1 PHASE 2 WIRE 1  
PHASE 3 WIRE AND 3 PHASE 4 WIRE 120 120 240 AND 120 208 V DOD MODEL MEP 003A UTILITY CLASS 60 HZ NSN  
6115 00 465 1030 AND MODEL MEP 112A UTILITY CLASS 400 HZ 6115 00 465 1027 NAVFAC P 8 623 12 TO 35C2 3 455 1  
TM 05684C 05685B 12 032781 TM 5 6115 584 34 8 GENERATOR SET DIESEL ENGINE DRIVEN TAC SKID MOUNTED 5  
KW 1 PHASE 2 WIRE 1 PHASE 3 WIRE 3 PHASE 120 120 240 AND 120 208 V DOD MODEL MEP 002A UTILITY CLASS NSN  
6115 00 465 1044 NAVFAC P 8 622 34 TO 35C2 3 456 2 TM 0568C 34 032936 TM 5 6115 329 14 4 GENERATOR SET  
GASOLINE ENGINE DRIVEN 0 5 KW LESS ENGINE DOD MODEL MEP 014 UTILITY CLASS 60 HZ NSN 6115 00 923 4469  
DOD MODEL MEP 01 UTILITY CLASS 400 HZ 6115 00 940 7862 AND DOD MODEL MEP 024 UTILITY CLASS 28 VDC 6115  
00 940 7867 TO 35C2 3 440 1 033374 TM 5 6115 332 14 10 GENERATOR SET TAC GASOLINE ENGINE AIR COOLED 5 KW  
AC 120 240 V SINGLE PHASE V 3 PHASE SKID MOUNTED TUBULAR FRAME LESS ENGINE MILITARY DOD MODEL MEP  
017A UTILITY 60 HZ NSN 6115 00 017 8240 AND MODEL MEP 022A UTILITY 400 HZ 6115 00 017 8241 NAVFAC P 8 614  
14 TO 35C2 3 424 1 033750 TM 5 6115 585 34 9 GENERATOR SET DIESEL ENGINE DRIVEN TAC SKID MOUNTED 10 KW  
1 PHASE 2 WIRE 1 PHASE 3 WIRE 3 PHASE 4 WIRE 120 120 240 AND 120 208 VOLTS DOD MODEL MEP 003A UT CLASS  
60 HZ NSN 6115 00 465 1030 NAVFAC P 8 623 12 TO 35C2 3 455 2 TM 05684C 05685B 34 034072 TM 5 6115 585 24P 5  
GENERATOR SET DIESEL ENGINE DRIVEN TA SKID MTD 10 KW 1 PHASE 2 WIRE 1 PHASE 3 WIRE 3 PHASE 4 W 120 120  
240 AND 120 208 V DOD MODELS 003A UTILITY CLASS 60 NSN 6115 00 465 1030 AND MODEL MEP 112A UTILITY  
CLASS 400 6115 00 465 1027 NAVFAC P 8 623 24P TO 35C2 3 455 4 SL 4 05684C 06585B 040180 TM 5 6115 584 12 HR  
HAND RECEIPT MANUAL COVERING END ITEM COMPONENTS OF END ITEM C BASIC ISSUE ITEMS BII AND  
ADDITIONAL AUTHORIZATION LIST AAL GENERATOR SET DIESEL ENGINE DRIVEN TACTICAL SKID MTD 5 KW 1 WIRE

1 PH 3 WIRE 3 PH 4 WIRE 120 120 240 AND 120 208 V D MEP 002A UTILITY CLASS 60 HZ NSN 6115 00 465 1044 040833  
TM 5 6115 458 12 HR HAND RECEIPT MANUAL COVERING THE END ITEM COMPONENTS OF END ITE BASIC ISSUE  
ITEMS BII AND ADDITIONAL AUTHORIZATION LIST AA GENERATOR SET DIESEL ENGINE DRIVEN TACTICAL SKID  
MOUNTED 20 3 PHASE 4 WIRE 120 208 AND 240 416 V DOD MODEL MEP 009A UT CLASS 50 60 HZ NSN 6115 00 133  
9104 AND DOD MODEL MEP 108A PRECISE CLASS 50 60 HZ 6115 00 935 8729 040843 TM 5 6115 593 34 GENERATOR  
SET DIESEL ENGINE DRIVEN TAC SKID MTD 500 KW 3 PHASE 4 WIRE 120 208 AND 240 416 VOLTS DOD MODEL MEP  
029A CLASS UTILITY 50 60 HZ NSN 6115 01 030 DOD MODEL MEP 029B CLASS UTILITY 50 60 HZ 6115 01 318 6302  
INCLUDING OPTIONAL KITS DOD MODEL MEP 029AHK HOUSING KIT 6115 01 070 7550 DOD MODEL MEP 029ACM  
AUTOMATIC CONTROL MO 6115 01 275 7912 DOD MODEL MEP 029ARC REMOTE CONTROL MODULE 6110 01 070 7553  
DOD MODEL MEP 029ACC REMOTE CONTROL CABLE 6110 01 087 4127 NAVFAC P 8 041070 TM 5 6115 593 12  
GENERATOR SET ENGINE DRIVEN TACTICAL SKID MTD 500 KW 3 PHASE 4 WIRE 120 240 416 VOLTS DOD MODEL MEP  
029A CLASS UTILITY HERTZ 50 60 NSN 6115 01 030 6085 MEP 029B UTILITY 50 60 6115 01 318 INCLUDING OPTIONAL  
KTS DOD MODELS MEP 029AHK NOMENCLATURE HOUS 6115 01 070 7550 MEP 029ACM AUTOMATIC CONTROL  
MODULE 6115 01 275 7912 MEP 029ARC REMOTE CONTROL MODULE 6110 01 070 7553 MEP 029ACC REMOTE  
CONTROL CABLE 6110 01 087 4127 TO 35C2 3 463 1 041338 LO 55 1730 229 12 POWER UNIT AVIATION MULTI OUTPUT  
GTED ELECTRICAL HYDRAULIC PNEUMATIC AGPU WHEEL MOUNTED SELF PROPELLED TOWABLE DOD MODEL MEP  
360A CLASS PRECISE HERTZ 400 NSN 1730 01 144 1897 042791 TM 5 6115 457 12 HR HAND RECEIPT MANUAL  
COVERING THE BASIC ISSUE ITEMS BII FOR GE SET DIESEL ENGINE DRIVEN TACTICAL SKID MTD 100 KW 3 PHASE  
120 208 AND 240 416 V DOD MODELS MEP007A UTILITY CLASS 50 6 NSN 6115 00 133 9101 MODEL MEP 106A PRECISE  
CLASS 50 60 6115 00 133 9102 AND MODEL MEP116A PRECISE CLASS 400 HZ 6115 00 133 9103 043437 TM 5 6115 593  
24P 1 GENERATOR SET DIESEL ENGINE DRIVEN TACTICAL SKID MOUNTED 500 KW 3 PHA 4 WIRE 120 208 AND 240  
416 VOLTS DOD MODEL MEP 029A UTILITY CL 50 60 HZ NSN 6115 01 030 6085 MEP 029B UTILITY CLASS 50 60 6115 01  
318 6302 INCLUDING OPTIONAL KITS DOD MODEL MEP 029AHK HOUSING KIT 6115 01 070 7550 MEP 029ACM  
AUTOMATIC CONTROL MOD 6115 01 275 7912 MEP 029ARC REMOTE CONTROL MODULE 6110 01 070 7553 MEP  
029ACC REMOTE CONTROL CABLE 6110 01 087 NAVFAC P 8 631 24P TO 35C2 3 463 4 044703 TM 5 6115 545 12 HR  
HAND RECEIPT MANUAL COVERING COMPONENTS OF END ITEM COEI BAS ITEMS BII AND ADDITIONAL  
AUTHORIZATION LIST AAL FOR GENERA DIESEL ENGINE DRIVEN TACTICAL SKID MTD 60 KW 3 PHASE 4 WIRE 120  
208 AND 240 416 V DOD MODELS MEP 006A UTILITY CLASS 50 6 NSN 6115 00 118 1243 MODEL MEP 105A PRECISE  
CLASS 50 60 H 6115 00 118 1252 AND MODEL MEP 115A PRECISE CLASS 400 HZ 6115 00 118 1253 050998 TM 5 6115  
600 12 8 GENERATOR DIESEL ENGINE DRIVEN TACTICAL SKID MTD 100 KW 3 PHASE 4 WIR 120 208 AND 240 416 V

DOD MODEL MEP 007B CLASS UTILITY 50 60 NSN 6115 01 036 6374 INCLUDING OPTIONAL KITS DOD MODEL MEP00 WINTERIZATION KIT FUEL BURNING AND MEP007BWE WINTERIZATION KIT ELECTRIC 051007 TM 5 6115 600 24P 4 GENERATOR SET DIESEL ENGINE DRIVEN 100 KW 3 PHASE 4 WIRE 120 208 AND VOLTS DOD MODEL MEP 007B UTILITY CLASS 50 60 HZ NSN 6115 01 036 6374 INCLUDING OPTIONAL KITS DOD MODEL MEP007BWF WINTERIZATION KIT FUEL BURNING AND MEP007BWE WINTERIZATION KIT ELECTRIC TO 35C2 3 442 14 NAVFAC P 8 628 24P SL 4 07464B 057268 LO 5 6115 600 12 GENERATOR SET DIESEL ENGINE DRIVEN TACTICAL SKID MTD 100 KW PHASE 4 WIRE 120 208 AND 240 416 V DOD MODEL MEP007B CLASS UTILITY 50 60 HZ NSN 6115 01 036 6374 057513 LO 5 6115 604 12 GENERATOR SET DIESEL ENGINE DRIVEN AIR TRANSPORTABLE SKID MT 750 KW 3 PHASE 4 WIRE 2400 4160 AND 2200 3800 VOLTS DOD MOD MEP208A CLASS PRIME UTILITY HZ 50 60 NSN 6115 00 450 5881 LI 6115 12 9 060183 TM 5 6115 612 24P 6 GENERATOR SET AVIATION GAS TURBINE ENGINE DRIVEN INTEGRA TRAILER MOUNTED 10KW 28 VOLTS MODEL MEP 362A PRECISE DC NSN 6115 01 161 3992 TM 6115 24P 1 AG 320B0 IPE 000 TO 35C2 3 471 4 060188 TM 5 6115 612 34 4 GENERATOR SET AVIATION GAS TURBINE ENG DRIVEN INTEGRAL TRAILER MOUNTED 10KW 28 VOLTS DOD MODEL MEP 36 PRECISE DC NSN 6115 01 161 3992 AG 320B0 MME 000 TM 6115 TO 35C2 3 471 2 060645 LO 5 6115 612 12 AVIATION GENERATOR SET GAS TURBINE ENGINE DRIVEN INTEGRAL TR MOUNTED 10KW 28 VOLTS DC DOD MODEL MEP 362A CLASS PRECISE NSN 6115 01 161 3992 060921 TM 55 1730 229 34 5 POWER UNIT AVIATION MULTI OUTPUT GTED ELECTRICAL HYDRAULIC PNEUMATIC AGPU WHEEL MOUNTED SELF PROPELLED TOWA AC 400HZ 3PH 0 8 PF 115 200V 30 KW DC 28VDC 700 AMPS PNEUMATIC 60 LBS MIN AT 40 PSIG HYDRAULIC 15 GPM AT 3300 PS DOD MODEL MEP 360A CLASS PRECISE 400 HERTZ NSN 1730 01 144 AG 320A0 MME 000 TO 35C2 3 473 2 TM 1730 34 1 060922 TM 55 1730 229 12 8 POWER UNIT AVIATION MULTI OUTPUT GTED ELECTRICAL HYDRAULIC PNEUMATIC AGPU WHEEL MOUNTED SELF PROPELLED TOWABLE AC 400HZ 3PH 0 8 PF 115 200V 30 KW DC 28 VDC 700 AMPS PNEUMATIC 60 LBS M AT 40 PSIG HYDRAULIC 15 GPM AT 3300 PSIG DOD MODEL MEP 360A CLASS PRECISE HERTZ 400 NSN 1730 01 144 1897 AG 320A0 OMM 000 TO 35C2 3 473 1 TM 1730 12 1 061758 LO 5 6115 614 12 GENERATOR SET DIESEL ENGINE DRIVEN TACTICAL SKID MTD 200 KW 3 PHASE 4 WIRE 120 208 AND 240 416 VOLTS MODEL MEP009B UTILI 50 60 HERTZ NSN 6115 01 021 4096 061772 LO 5 6115 622 12 GENERATOR SET DIESEL ENGINE DRIVEN WHEEL MOUNTED 750 KW 3 PH 4 WIRE 2200 3800 AND 2400 4160 VOLTS CUMMINS ENGINE COMPANY IN MODEL KTA 2300G 2 DOD MODEL MEP 012A CLASS UTILITY HERTZ 062762 LO 5 6115 615 12 GENERATOR SET DIESEL ENGINE DRIVEN TACTICAL SKID MOUNTED 3 K MODEL 016B CLASS UTILITY MODE 50 60 HZ NSN 6115 01 150 4140 DOD MODEL MEP 021B CLASS UTILITY MODE 400 HZ 6115 01 151 812 DOD MODEL MEP 026B CLASS UTILITY MODE 28 VDC 6115 01 150 036 LI 05926B 06509B 12 5 P 8 646 LO 064310 TM 5 6115 626 14 TM 1730 24P AG 320A0 IPB 000 065603 TB 5 6115 593 24 WARRANTY PROGRAM FOR GENERATOR SET DOD

MODEL MEP 029A HOUSING K DOD MODEL MEP 029AHK 066727 TM 5 6115 640 14 2 MEP 005A 30 KW 60 HZ GEN  
SETS 2 M200A1 2 WHEEL 4 TIRE MODIFIED TRAILERS 066809 TM 5 6115 630 14 MEP 104A PRECISE 50 60 HERTZ 6115  
00 118 1247 MEP 114A PRECISE 400 HERTZ 6115 00 118 INCLUDING AUXILIARY EQUIPMENT MEP 005AWF  
WINTERIZATION KIT FUE BURNING 6115 00 463 9083 MEP 005AWE WINTERIZATION KIT ELEC 6115 00 067310 TM 9  
6115 650 14 DOD MODEL MEP 104A 6115 00 118 1245 DOD MODEL MEP 113A 6115 00 118 1244 069954 TM 9 6115 465  
24P 2 GENERATOR SET DIESEL ENGINE DRIVE TACTICAL SKID MTD 30KW 3 PHASE 4 WIRE 120 208 AND 240 416 V  
MODELS MEP 005A UTILITY 50 60 HZ NSN 6115 00 118 1240 MEP 104A PRECISE 50 60 HZ 6115 00 118 1247 MEP 114A  
PRECISE 400 H 6115 00 118 1248 INCLUDING OPTIONAL KITS DOD MODELS MEP 00 WINTERIZATION KIT FUEL  
BURNING 6115 00 463 9083 MEP 005 AW WINTERIZATION KIT ELECTRIC 6115 00 463 9085 MEP 002 ALM L BANK KIT  
6115 00 463 9088 MEP 005 AWM WHEEL MOUNTING KIT 6115 00 463 9094 TO 35C2 3 070096 TM 9 6115 464 24P 1  
GENERATOR S DIESEL ENGINE DRIVEN TACTICAL SKID MTD 15KW 3 PHASE 4 WIRE 120 208 AND 240 416 VOLTS DOD  
MODEL MEP 004A UTILITY CLASS 50 60 HERTZ NSN 6115 00 118 1241 DOD MODEL MEP 103A PRECISE CLASS 50 60  
HERTZ 6115 00 118 1245 DOD MODEL MEP 113A PRECI CLASS 400 HERTZ 6115 00 118 1244 INCLUDING OPTIONAL  
KITS DOD MODEL MEP 005 AWF WINTERIZATION KIT FUEL BURNING 6115 00 463 DOD MODEL MEP 005 AWE  
WINTERIZATION KIT ELECTRIC 6615 00 46 DOD MODEL MEP 004 ALM LOAD BANK KIT 6115 00 191 9201 071025 TM 9  
6115 641 10 2 GENERATOR SET SKID MOUNTED TACTICAL QUIET 5 KW 60 AND 400 HZ MEP 802A 60 HZ NSN 6115 01  
274 7387 MEP 812A 400 HZ 6115 01 274 7391 TO 35C2 3 456 11 071026 TM 9 6115 642 10 2 GENERATOR SET SKID  
MOUNTED TACTICAL QUIE 10 KW 60 AND 400 HZ MEP 803A 60 HZ NSN 6115 01 275 5061 MEP 813A 400 HZ 6115 01  
274 7392 TO 35C2 3 455 11 TM 09247A 09248A 10 1 071028 TM 9 6115 643 10 3 GENERATOR SET SKID MOUNTED  
TACTICAL QUI 15 KW 50 60 AND 400 HZ MEP 804A 50 60 HZ NSN 6115 01 274 73 MEP 814A 400 HZ 6115 01 274 7393  
TO 35C2 3 445 21 071029 TM 9 6115 644 10 2 GENERATOR SET SKID MOUNTED TACTICAL QUIET 30 KW 50 60 AND 400  
HZ MEP 805A 50 60 HZ NSN 6115 01 274 7389 MEP 815A 400 HZ 6115 01 274 7394 TO 35C2 3 446 11 TM 09249A 09246A  
10 1 071030 TM 9 6115 645 10 2 GENERATOR SET SKID MOUNTED TACTICAL QUIET 60 KW 50 60 AND 400 HZ MEP  
806A 50 60 HZ NSN 6115 01 274 7390 MEP 816A 400 HZ 6115 01 274 7395 TO 35C2 3 444 11 TM 09244A 09245A 10 1  
071031 LO 9 6115 641 12 GENERATOR SET SKID MOUNTED TACTICAL QUIET 5 KW 60 AND 400 HZ MEP 802A TACTICAL  
QUIET 60 HZ NSN 6115 01 274 7387 MEP 812A TACTICAL QUIET 400 HZ 6115 01 274 7391 071032 LO 9 6115 642 12  
GENERATOR SET SKID MOUNTED TACTICAL QUIET 10 KW 60 AND 400 HZ MEP 803A TACTICAL QUIET 60 HZ NSN 6115  
01 275 5061 MEP 813A TACTICAL QUIET 400 HZ 6115 01 274 7392 071033 LO 9 6115 643 12 GENERATOR SET SKID  
MOUNTED TACTICAL QUIET 15 KW 50 60 400 HZ MEP 804A TACTICAL QUIET 50 60 HZ NSN 6115 01 274 7388 MEP 814  
TACTICAL QUIET 400 HZ 6115 01 274 7393 071034 LO 9 6115 644 12 GENERATOR SET SKID MOUNTED TACTICAL



QUIET 30 KW 50 60 AND 40 MEP 805A TACTICAL QUIET 50 60 HZ NSN 6115 01 274 7389 MEP 815 TACTICAL QUIET 400 HZ 6115 01 274 7394 LI 09249A 09246A 12 071035 LO 9 6115 645 12 GENERATOR SET SKID MOUNTED TACTICAL QUIET 60 KW 50 60 AND 40 MEP 806A TACTICAL QUIET 50 60 HZ NSN 6115 01 274 7390 MEP 816 TACTICAL QUIET 400 HZ 6115 01 274 7395 LI 09244A 09245A 12 071036 TB 9 6115 641 24 WARRANTY PROGRAM FOR GENERATOR SET TACTICAL QUIET 5 KW 60 AND 400 HZ MEP 802A AND MEP 812A 071037 TB 9 6115 642 24 WARRANTY PROGRAM FOR GENERATOR SET TACTICAL QUIET 10 KW 60 AND 400 HZ MEP 803A AND MEP 813A SI 09247A 09248A 24 071038 TB 9 6115 643 24 WARRANTY PROGRAM FOR GENERATOR SET TACTICAL QUIET 15 KW 50 60 AND 400 HZ MEP 804A AND MEP 814A 071039 TB 9 6115 644 24 WARRANTY PROGRAM FOR GENERATOR SET TACTICAL QUIET 30 KW 50 60 AND 400 HZ MEP 805A AND MEP 815A SI 09249A 09246A 24 071040 TB 9 6115 645 24 WARRANTY PROGRAM FOR GENERATOR SET TACTICAL QUIET 60 KW 50 60 AND 400 HZ MEP 806A AND MEP 816A SI 09244A 09245A 24 071541 TM 9 6115 464 12 2 GENERATOR SET DIESEL ENGINE DRIVEN TACTICAL SKID MTD 15 KW 3 PHASE 4 WIRE 120 2 AND 240 416 VOLTS DOD MODEL MED 004A UTILITY CLASS 50 60 HERTZ NSN 6115 00 118 1241 DOD MODEL MEP 103A PRECISE CLASS 50 60 HERTZ 6115 00 118 1245 DOD MODEL MEP 113A PRECISE CLASS 400 HERTZ 6115 00 118 1244 INCLUDING OPTIONAL KITS DOD MODEL MEP 005 AWF WINTERIZATION KIT FUEL BURNING 6115 00 463 9083 DOD MODEL MEP 005 AWE WINTERIZATION KIT ELECTRIC 6115 00 463 9085 DOD MODEL MEP 004 ALM LOAD BANK KIT 6115 00 291 071604 TM 9 6115 645 24P GENERATOR SET TACTICAL QUIET 60KW 50 60 400 HZ NSN 6115 01 274 7390 MEP 806A 6115 01 274 7395 MEP 816A TO 35C2 3 444 14 TM 09244A 09245A 24P 3 071605 TM 9 6115 642 24P GENERATOR SET TACTICAL QUIET 10 KW 60 400 HZ NSN 6115 01 275 5061 MEP 803A 6115 01 274 7392 MEP 813A TO 35C2 3 455 14 TM 09247A 09248A 24P 3 071610 TM 9 6115 643 24P GENERATOR SET TACTICAL QUIET 15KW 50 60 400 HZ NSN 6115 01 274 7388 MEP 804A 6115 01 274 7393 MEP 814A TO 35C2 3 445 24 071611 TM 9 6115 644 24P GENERATOR SET TACTICAL QUIET 30KW 50 60 400 HZ NSN 6115 01 274 7389 MEP 805A 6115 01 274 7394 MEP 815A TO 35C2 3 446 14 TM 09249A 09246A 24P 3 071613 TM 9 6115 641 24P GENERATOR SET TACTICAL QUIET 5 KW 60 400 HZ NSN 6115 01 274 7387 MEP 802A 6115 01 274 7391 MEP 812A TO 35C2 3 456 14 071713 TM 9 6115 645 24 4 GENERATOR SET SKID MOUNTED TACTICAL QUIET 60KW 50 60 AND 400 HZ MEP 806A 50 60 HZ NSN 6115 01 274 7390 MEP 816A 400 HZ 6115 01 274 7395 TO 35C2 3 444 12 TM 09244A 09245A 24 2 071748 TM 9 6115 644 24 1 GENERATOR SET SKID MOUNTED TACTICAL QUIET 30 KW 50 60 AND 400 HZ MEP 805A 50 60 HZ NSN 6115 01 274 7389 MEP 815A 400 HZ 6115 01 274 7394 TO 35C2 3 446 12 TM 09249A 09246A 24 2 071749 TM 9 6115 643 24 4 GENERATOR SET SKID MOUNTED TACTICAL QUIET 15 KW 50 60 AND 400 HZ MEP 804A 50 60 HZ NSN 6115 01 274 7388 MEP 814A 400 HZ 6115 01 274 7393 TO 35C2 3 445 22 071750 TM 9 6115 642 24 4 GENERATOR SET SKID MOUNTED TACTICAL QUIET 10 KW 60 AND 400 HZ MEP 803A 60 HZ NSN 6115 01 275 5061 MEP 813A 400 HZ 6115 01 274 7392 TO 35C2 3 455 12 TM

09247A 09248A 24 2 071751 TM 9 6115 641 24 3 GENERATOR SET SKID MOUNTED TACTICAL QUIET 5 KW 60 AND 400 HZ MEP 802A 60 HZ NSN 6115 01 274 7387 MEP 812A 400 HZ 6115 01 274 7391 TO 35C2 3 456 12 072239 TM 9 6115 464 34 1 GENERATOR SET DIESEL ENGINE DRIVEN TACTICAL SKID MTD 15 KW 3 PHASE 4 WIRE 120 208 AND 240 416 VOLTS DOD MODEL MEP 004A UTILITY CLASS 50 60 HERTZ NSN 6115 00 118 1241 DOD MODEL MEP 103A PRECISE CLASS 50 60 HERTZ 6115 00 118 1245 DOD MODEL MEP 113A PRECISE CLASS 400 HERTZ 6115 00 118 1244 INCLUDING OPTIONAL KITS DOD MODEL MEP 005AWF WINTERIZATION KIT FUEL BURNING 6115 00 463 9083 DOD MODEL MEP 005AWE WINTERIZAT KIT ELECTRIC 6115 00 463 9085 DOD MODEL MEP 004ALM LOAD BANK KIT 6115 00 291 920 073744 TM 9 6115 604 24P 1 GENERATOR SET DIESEL ENGINE DRIVEN AIR TRANSPORTABLE SKID MOUNTED 750KW 3 PHASE 4 WIRE 2400 4160 AND 2200 3800 VOLTS DOD MODEL MEP208A PRIME UTILITY CLASS 50 60 HERTS NSN 6115 00 450 5881 DOD MODEL 80 1466 REMOTE CONTROL MODULE CLASS 6115 01 150 5284 DOD MODEL 80 7320 SITE REQUIREMENTS MODULE CLASS 6115 01 150 5 NAVFAC P 8 633 24P 074040 TM 9 6115 545 24P GENERATOR SET DIESEL ENGINE DRIVEN TAC SKID MTD 60 KW 3 PHASE 4 WIRE 120 208 AND 240 416 VOLTS D MODELS MEP 006A UTILITY CLASS 50 60 H Z NSN 6115 00 118 124 MEP 105A PRECISE CLASS 50 60 H Z 6115 00 118 1252 MEP 115 PRECISE CLASS 400 H Z 6115 00 118 1253 INCLUDING OPTIONAL K DOD MODELS MEP 006AWF WINTERIZATION FUEL BURNING 6115 00 407 MEP 006AWE WINTERIZATION KIT ELECTRIC 6115 00 455 7693 ME LOAD BANK KIT 6115 00 407 8322 AND MEP 006AWM WHEEL MOUNTI 6115 00 463 9092 TO 074212 TM 9 6115 604 12 GENERATOR SET DIESEL DRIVEN AIR TRANSORTABLE SKID MTD 750 KW 3 PHASE 4 WIRE 24 AND 2200 3800 V DOD MODEL MEP 208A CLASS PRIME UTILITY HZ 50 NSN 6115 00 450 5881 NAVFAC P 8 633 12 074896 TM 9 6115 604 34 GENERATOR SET DIESEL ENGINE DRIVEN AIR TRANSPORTABLE SKID MTD 750 KW 3 PHASE 4 WIRE 2400 4160 AND 2200 3800 VOLTS DOD MODEL MEP 208A PRIME UTILITY CLASS 50 60 HERTZ NSN 6115 00 450 5881 NAVFAC P 8 633 34 075027 TM 9 6115 584 24P 1 GENERATOR SET DIESEL E DRIVEN TACTICAL SKID MTD 5 KW 1 PHASE 2 WIRE 1 PHASE 3 WIR 3 PHASE 4 WIRE 120 120 240 AND 120 208 VOLTS DOD MODEL MEP UTILITY CLASS 60 HZ NSN 6115 00 465 1044 NAVFAC P 8 622 24P TO 35C2 3 456 4 077581 TM 9 6115 673 13 P 2KW MILITARY TACTICAL GENERATOR SET 120 VAC 60 HZ NSN 6115 01 435 1565 MEP 531A EIC LKA NSN 6115 21 912 0393 MECHRON 28 VDC NSN 6115 01 435 1567 MEP 501A EIC LKD NSN 6115 21 912 0392 MECHRON 078167 TM 9 6115 672 14 GENERATOR SET SKID MOUNTED TACTICAL QUIET 60KW 50 60 AND 400 HZ MEP 806B 50 60 HZ NSN 6115 01 462 0291 EIC GGW MEP 816B 400 HZ NSN 6115 01 462 0292 EIC GGX 078443 TM 9 6115 639 13 1 3KW TACTICAL QUIET GENERATOR SET MEP 831A 60 HZ NSN 6115 01 285 3012 EIC VG6 MEP 832A 400 HZ NSN 6115 01 287 2431 EIC VN7 078490 TM 9 6115 671 14 OPERATOR UNIT GENERATOR SET SKID MOUNTED TACTICAL QUIET 30 KW 50 60 AND 400 HZ MEP 805B 50 60 HZ NSN 6115 01 461 9335 EIC GGU MEP 815B 400 HZ 6115 01 462 0290 EIC GGV 078503 TM 9 6115 671 24P GENERATOR SET SKID

MOUNTED TACTICAL QUIET 30 KW 50 60 AND 400 HZ MEP 805B 50 60 HZ NSN 6115 01 461 9335 EIC GGU MEP 815B 400 HZ NSN 6115 01 462 0290 EIC GGV 078504 TM 9 6115 672 24P GENERATOR SET SKID MOUNTED TACTICAL QUIET 60 KW 50 60 AND 400 HZ MEP 806B 50 60 HZ NSN 6115 01 462 0291 EIC GGW MEP 816B 400 HZ NSN 6115 01 462 0292 EIC GGX 078505 TB 9 6115 671 24 WARRANTY PROGRAM FOR GENERATOR SET TACTICAL QUIET 30KW 50 60 AND 400 HZ MEP 805B AND MEP 815B PROCURED UNDER CONTRACT DAAK01 96 D 00620WITH MCII INC 078506 TB 9 6115 672 24 WARRANTY PROGRAM FOR GENERATOR SET TACTICAL QUIET 30KW 50 60 AND 400 HZ MEP 806B AND MEP 816B PROCURED UNDER CONTRACT DAAK01 96 D 00620WITH MCII INC 078523 TM 9 6115 664 13 P 5KW 28VDC AUXILIARY POWER UNIT APU MEP 952B NSN 6115 01 452 6513 EIC N A 078878 TM 9 6115 639 23P 3KW TACTICAL QUIET GENERATOR SET MEP 831A 60 HZ NSN 6115 01 285 3012 EIC VG6 MEP 832A 400 HZ NSN 6115 01 287 2431 EIC VN7 079379 TB 9 6115 641 13 WINTERIZATION KIT NSN 6115 01 476 8973 INSTALLED ON GENERATOR SET SKID MOUNTED TACTICAL QUIET 5KW 60 AND 400 HZ MEP 802A 600HZ 6115 01 274 7387 MEP 812A 400HZ 6115 01 274 7391 079460 TB 9 6115 642 13 WINTERIZATION KIT NSN 6115 01 477 0564 EIC N A INSTALLED ON GENERATOR KIT SKID MOUNTED TACTICAL QUIET 10KW 60 AND 400 HZ MEP 803A 60HZ 6115 01 275 0561 MEP 813A 400HZ 6115 01 274 7392 079461 TB 9 6115 643 13 WINTERIZATION KIT NSN 6115 477 0566 INSTALLED ON GENERATOR SET SKID MOUNTED TACTICAL QUIET 15KW 50 60 AND 400 HZ MEP 804A 50 60HZ 6115 01 274 7388 MEP 814A 400HZ 6115 01 274 7393 079462 TB 9 6115 644 13 WINTERIZATION KIT NSN 6115 01 474 8354 EIC N A INSTALLED ON GENERATOR SET SKID MOUNTED 30KW 50 60 AND 400 HZ MEP 805A 50 60HZ NSN 6115 01 274 7389 MEP 815A 400HZ NSN 611501 274 7394 079463 TB 9 6115 645 13 WINTERIZATION KIT NSN 6115 01 474 8344 EIC N A INSTALLED ON GENERATOR SET SKID MOUNTED TACTICAL QUIET 60KW 50 60 AND 400 HZ MEP 806A 50 60HZ 6115 01 274 7390 MEP 816A 400HZ 6115 01 274 7395 080214 TM 9 6115 670 14 P AUXILIARY POWER UNIT 20KW 120 240 VAC 60 HZ MODEL NO MEP 903A SICPS NSN 6115 01 431 3062 MODEL NUMBER MEP 903B JTACS NSN 6115 01 431 3063 MODEL NO MEP 903C9WIN T NSN 6115 01 458 5329 EIC N A

*Federal Airways Manual of Operations ...: V-A-1 [through] V-D-4-12-2* United States. Civil Aeronautics Administration,1947 **Operator, Organizational, and Direct Support Maintenance Manual for Test Set, Electronics System, AN/TSM-100A (NSN 4933-01-047-3389).**,1982 *Operator's, Organizational, Direct Support, and General Support Maintenance Manual* ,1972 **Technical Manual** United States Department of the Army,1958

**Technical Manual** United States. War Department,1944 **Manuals Combined: 50 + Army T-62 T-53 T-55 T-700 AVIATION GAS TURBINE ENGINE Manuals** , Over 70 350 Mbs U S Army Repair Maintenance and Part Technical Manuals TMs related to U S Army helicopter and fixed wing turbine aircraft engines as well as turbine power plants generators Just a SAMPLE of the CONTENTS ENGINE AIRCRAFT TURBOSHAFT MODELS T700 GE 700 T700 GE 701 T700 GE 701C 1 485 pages TURBOPROP AIRCRAFT ENGINE 526 pages ENGINE GAS TURBINE MODEL T55 L 712 997 pages

ENGINE ASSEMBLY GAS TURBINE GTCP36 150 BH GTCP36 150 BH 324 pages ENGINE AIRCRAFT GAS TURBINE T63 A 5A T63 A 700 144 pages ENGINE AIRCRAFT GAS TURBINE MODEL T63 A 720 208 pages ENGINE AIRCRAFT TURBOSHAFT T703 AD 700 T703 AD 700A T703 AD 700B 580 pages ENGINE ASSEMBLY T700 GE 701 247 pages ENGINE ASSEMBLY GAS TURBINE GTCP3645 H 214 pages ENGINE AIRCRAFT GAS TURBINE MODEL T63 A 720 208 pages GAS TURBINE ENGINE AUXILIARY POWER UNIT APU MODEL T 62 T 40 1 344 pages ENGINE ASSEMBLY T700 GE 700 243 pages SANDY ENVIRONMENT AND OR COMBAT OPERATIONS FOR T53 L 13B T53 L 13BA AND T53 L 703 ENGINES 112 pages DUAL PURPOSE MOBILE CHECK AND ADJUSTMENT GENERATOR STAND FOR T62T 2A AND T62T 2A1 AUXILIARY POWER UNITS T62T 40 1 AND T62T 2B AUXILIARY POWER UNITS 193 pages Others included POWER PLANT UTILITY GAS TURBINE ENGINE DRI LIBBY WELDING CO MODEL LPU 71 FSN 6115 937 0929 NON WINT AND 6115 134 0825 WINTERIZED POWER PLANT UTILITY MUST GAS TURBINE ENGINE DRIVEN AIRESEARCH CO MODEL NO PPU85 5 LIBBY WELDING CO MODEL NO LPU 71 AME CORP MODEL APP 1 AND HOLLINGSWORTH CO MODEL NO JHTWX10 9 NSN 6115 00 937 0929 NON WINTERIZED AND 6115 00 134 0825 WINTERIZED POWER PLANT UTILITY MUST GAS TURBINE ENGINE DRIVEN AIRESEA MODEL PPU85 5 LIBBY WELDING CO MODEL LPU 71 AMERTECH CO MODEL APP 1 AND HOLLINGSWORTH CO MODEL JHTWX10 96 NSN 6115 00 937 0929 NON WINTERIZED AND 6115 00 134 0825 WINTERIZED GENERATOR SET GAS TURBINE ENGINE DRIVEN TACTICAL SKID MTD 1 400 HZ ALTERNATING CURRENT GENERATOR SET GAS TURBINE ENGINE 45 KW AC 120 208 AND 240 4 3 PHASE 4 WIRE SKID MTD WINTERIZED AIRESEARCH MODEL GTGE 70 FSN 6115 075 1639 POWER PLAN UTILITY MUST GAS TURBINE ENGINE DRIVEN AIRESEARCH CO MOD PPU85 5 LIBBY WELDING CO MODEL LPU 71 AMERTECH CORP MODEL APP 1 AND HOLLINGSWORTH CO MODEL JHTWX 10 96 NSN 6115 00 937 0929 NONWINTERIZED AND 6115 00 134 0825 WINTERIZED POWER PLANT UTILITY GAS TURBINE ENGINE DRIVEN AMERTECH CORP MODEL APP 1 POWER PLANT UTILITY GAS TURBINE ENGINE DRIVEN LIBBY WELDING CO MODEL LPU 71 POWER UNIT UTILITY PACK GAS TURBINE ENGINE DRIVEN AIRESEARCH MODEL PPU85 5 TYPE A AVIATION UNIT AND INTERMEDIATE MAINTENANCE FOR GAS TURBINE ENGI AUXILIARY POWER UNIT APU MODEL T 62T 2B PART NO 161050 10 NSN 2835 01 092 2037 AVIATION UNIT AND INTERMEDIATE MAINTENANCE REPAIR PARTS AND SPE TOOLS LIST INCLUDING DEPOT MAINTENANCE REPAIR PARTS AND SPECIA FOR GAS TURBINE ENGINE AUXILIARY POWER UNIT APU MODEL T 62 PART NO 160150 100 NSN 2835 01 092 2037

Direct Support and General Support Maintenance Manual for Position and Azimuth Determining System AN/USQ-70 ,1990      Intrinsically Safe 5-V, 4-A Rechargeable Power Supply John J. Sammarco,1989

**Operator, Organizational, and Direct Support Maintenance Manual for Test Set, Electronic System AN/TSM-100A, (NSN 4933-01-047-3389).** ,1985      XY Dial Central Office Equipment ,1958      Operator, Organizational, and Direct Support Maintenance Manual for Test Set, Electronics System, AN/TSM-100B, (NSN. ,1985

**Operator, Organizational, Direct Support, and General Support Maintenance Manual ,1990      Direct Support  
and General Support Maintenance Manual ,1984      *Electronics Projects Vol. 19* EFY Enterprises Pvt Ltd,2009-11  
New York Review of the Telegraph and Telephone and Electrical Journal ,1916**

## Decoding **4v Battery Charger Schematic**: Revealing the Captivating Potential of Verbal Expression

In a period characterized by interconnectedness and an insatiable thirst for knowledge, the captivating potential of verbal expression has emerged as a formidable force. Its power to evoke sentiments, stimulate introspection, and incite profound transformations is genuinely awe-inspiring. Within the pages of "**4v Battery Charger Schematic**," a mesmerizing literary creation penned with a celebrated wordsmith, readers set about an enlightening odyssey, unraveling the intricate significance of language and its enduring impact on our lives. In this appraisal, we shall explore the book's central themes, evaluate its distinctive writing style, and gauge its pervasive influence on the hearts and minds of its readership.

[https://forums.acdsystems.com/data/book-search/Documents/air\\_brakes\\_diagram\\_for\\_a\\_freightliner\\_classic.pdf](https://forums.acdsystems.com/data/book-search/Documents/air_brakes_diagram_for_a_freightliner_classic.pdf)

### Table of Contents **4v Battery Charger Schematic**

1. Understanding the eBook 4v Battery Charger Schematic
  - The Rise of Digital Reading 4v Battery Charger Schematic
  - Advantages of eBooks Over Traditional Books
2. Identifying 4v Battery Charger Schematic
  - Exploring Different Genres
  - Considering Fiction vs. Non-Fiction
  - Determining Your Reading Goals
3. Choosing the Right eBook Platform
  - Popular eBook Platforms
  - Features to Look for in an 4v Battery Charger Schematic
  - User-Friendly Interface
4. Exploring eBook Recommendations from 4v Battery Charger Schematic
  - Personalized Recommendations
  - 4v Battery Charger Schematic User Reviews and Ratings
  - 4v Battery Charger Schematic and Bestseller Lists

5. Accessing 4v Battery Charger Schematic Free and Paid eBooks
  - 4v Battery Charger Schematic Public Domain eBooks
  - 4v Battery Charger Schematic eBook Subscription Services
  - 4v Battery Charger Schematic Budget-Friendly Options
6. Navigating 4v Battery Charger Schematic eBook Formats
  - ePub, PDF, MOBI, and More
  - 4v Battery Charger Schematic Compatibility with Devices
  - 4v Battery Charger Schematic Enhanced eBook Features
7. Enhancing Your Reading Experience
  - Adjustable Fonts and Text Sizes of 4v Battery Charger Schematic
  - Highlighting and Note-Taking 4v Battery Charger Schematic
  - Interactive Elements 4v Battery Charger Schematic
8. Staying Engaged with 4v Battery Charger Schematic
  - Joining Online Reading Communities
  - Participating in Virtual Book Clubs
  - Following Authors and Publishers 4v Battery Charger Schematic
9. Balancing eBooks and Physical Books 4v Battery Charger Schematic
  - Benefits of a Digital Library
  - Creating a Diverse Reading Collection 4v Battery Charger Schematic
10. Overcoming Reading Challenges
  - Dealing with Digital Eye Strain
  - Minimizing Distractions
  - Managing Screen Time
11. Cultivating a Reading Routine 4v Battery Charger Schematic
  - Setting Reading Goals 4v Battery Charger Schematic
  - Carving Out Dedicated Reading Time
12. Sourcing Reliable Information of 4v Battery Charger Schematic
  - Fact-Checking eBook Content of 4v Battery Charger Schematic
  - Distinguishing Credible Sources
13. Promoting Lifelong Learning

- Utilizing eBooks for Skill Development
- Exploring Educational eBooks

### 14. Embracing eBook Trends

- Integration of Multimedia Elements
- Interactive and Gamified eBooks

## 4v Battery Charger Schematic Introduction

In the digital age, access to information has become easier than ever before. The ability to download 4v Battery Charger Schematic has revolutionized the way we consume written content. Whether you are a student looking for course material, an avid reader searching for your next favorite book, or a professional seeking research papers, the option to download 4v Battery Charger Schematic has opened up a world of possibilities. Downloading 4v Battery Charger Schematic provides numerous advantages over physical copies of books and documents. Firstly, it is incredibly convenient. Gone are the days of carrying around heavy textbooks or bulky folders filled with papers. With the click of a button, you can gain immediate access to valuable resources on any device. This convenience allows for efficient studying, researching, and reading on the go. Moreover, the cost-effective nature of downloading 4v Battery Charger Schematic has democratized knowledge. Traditional books and academic journals can be expensive, making it difficult for individuals with limited financial resources to access information. By offering free PDF downloads, publishers and authors are enabling a wider audience to benefit from their work. This inclusivity promotes equal opportunities for learning and personal growth. There are numerous websites and platforms where individuals can download 4v Battery Charger Schematic. These websites range from academic databases offering research papers and journals to online libraries with an expansive collection of books from various genres. Many authors and publishers also upload their work to specific websites, granting readers access to their content without any charge. These platforms not only provide access to existing literature but also serve as an excellent platform for undiscovered authors to share their work with the world. However, it is essential to be cautious while downloading 4v Battery Charger Schematic. Some websites may offer pirated or illegally obtained copies of copyrighted material. Engaging in such activities not only violates copyright laws but also undermines the efforts of authors, publishers, and researchers. To ensure ethical downloading, it is advisable to utilize reputable websites that prioritize the legal distribution of content. When downloading 4v Battery Charger Schematic, users should also consider the potential security risks associated with online platforms. Malicious actors may exploit vulnerabilities in unprotected websites to distribute malware or steal personal information. To protect themselves, individuals should ensure their devices have reliable antivirus software installed and validate the legitimacy of the websites they are downloading from. In conclusion, the ability to download 4v Battery Charger



Schematic has transformed the way we access information. With the convenience, cost-effectiveness, and accessibility it offers, free PDF downloads have become a popular choice for students, researchers, and book lovers worldwide. However, it is crucial to engage in ethical downloading practices and prioritize personal security when utilizing online platforms. By doing so, individuals can make the most of the vast array of free PDF resources available and embark on a journey of continuous learning and intellectual growth.

### **FAQs About 4v Battery Charger Schematic Books**

How do I know which eBook platform is the best for me? Finding the best eBook platform depends on your reading preferences and device compatibility. Research different platforms, read user reviews, and explore their features before making a choice. Are free eBooks of good quality? Yes, many reputable platforms offer high-quality free eBooks, including classics and public domain works. However, make sure to verify the source to ensure the eBook credibility. Can I read eBooks without an eReader? Absolutely! Most eBook platforms offer webbased readers or mobile apps that allow you to read eBooks on your computer, tablet, or smartphone. How do I avoid digital eye strain while reading eBooks? To prevent digital eye strain, take regular breaks, adjust the font size and background color, and ensure proper lighting while reading eBooks. What the advantage of interactive eBooks? Interactive eBooks incorporate multimedia elements, quizzes, and activities, enhancing the reader engagement and providing a more immersive learning experience. 4v Battery Charger Schematic is one of the best book in our library for free trial. We provide copy of 4v Battery Charger Schematic in digital format, so the resources that you find are reliable. There are also many Ebooks of related with 4v Battery Charger Schematic. Where to download 4v Battery Charger Schematic online for free? Are you looking for 4v Battery Charger Schematic PDF? This is definitely going to save you time and cash in something you should think about. If you trying to find then search around for online. Without a doubt there are numerous these available and many of them have the freedom. However without doubt you receive whatever you purchase. An alternate way to get ideas is always to check another 4v Battery Charger Schematic. This method for see exactly what may be included and adopt these ideas to your book. This site will almost certainly help you save time and effort, money and stress. If you are looking for free books then you really should consider finding to assist you try this. Several of 4v Battery Charger Schematic are for sale to free while some are payable. If you arent sure if the books you would like to download works with for usage along with your computer, it is possible to download free trials. The free guides make it easy for someone to free access online library for download books to your device. You can get free download on free trial for lots of books categories. Our library is the biggest of these that have literally hundreds of thousands of different products categories represented. You will also see that there are specific sites catered to different product types or

categories, brands or niches related with 4v Battery Charger Schematic. So depending on what exactly you are searching, you will be able to choose e books to suit your own need. Need to access completely for Campbell Biology Seventh Edition book? Access Ebook without any digging. And by having access to our ebook online or by storing it on your computer, you have convenient answers with 4v Battery Charger Schematic To get started finding 4v Battery Charger Schematic, you are right to find our website which has a comprehensive collection of books online. Our library is the biggest of these that have literally hundreds of thousands of different products represented. You will also see that there are specific sites catered to different categories or niches related with 4v Battery Charger Schematic So depending on what exactly you are searching, you will be able to choose ebook to suit your own need. Thank you for reading 4v Battery Charger Schematic. Maybe you have knowledge that, people have search numerous times for their favorite readings like this 4v Battery Charger Schematic, but end up in harmful downloads. Rather than reading a good book with a cup of coffee in the afternoon, instead they juggled with some harmful bugs inside their laptop. 4v Battery Charger Schematic is available in our book collection an online access to it is set as public so you can download it instantly. Our digital library spans in multiple locations, allowing you to get the most less latency time to download any of our books like this one. Merely said, 4v Battery Charger Schematic is universally compatible with any devices to read.

### **Find 4v Battery Charger Schematic :**

**air brakes diagram for a freightliner classic**

~~aircraft operating manual b777~~

aisc connections manual for hollow structural sections

~~air brush motor matie~~

*agway lawn tractor parts manual*

~~aisc design guide 4~~

**air book consumer guest purifier report**

**airman air compressor sas37sd manual**

*ags united states history workbook answers*

~~aha first aid quick reference guide~~

**aimsweb technical manual for early literacy**

**airbus a320 manual s**

**air force manual 900 3**

airbus standard wiring practices manual

## airport express manual reset

### 4v Battery Charger Schematic :

SSD1 Module 1 Exam Flashcards Study with Quizlet and memorize flashcards containing terms like The Army Standard for observations is by utilizing the SALUTE Report format. SSD1 Answers to Modules-1.doc - Structure Self ... View Test prep - SSD1 Answers to Modules-1.doc from HISTORY 101 at University of Puerto Rico, Rio Piedras. Structure Self-Development I Module 01 Army ... SSD 1 : Module 1 - AMU Access study documents, get answers to your study questions, and connect with real tutors for SSD 1 : Module 1 at American Military University. Ssd1 Army Form - Fill Out and Sign Printable PDF Template Filling out the ssd1 module1 test answers form with signNow will give greater confidence that the output template will be legally binding and safeguarded. Quick ... Army Ssd1 Module 2 Exam Answers Pdf Page 1. Army Ssd1 Module 2 Exam Answers Pdf. INTRODUCTION Army Ssd1 Module 2 Exam Answers Pdf [PDF] Reading free Army ssd1 module 3 exam answers ... - resp.app Yeah, reviewing a ebook army ssd1 module 3 exam answers could accumulate your near links listings. This is just one of the solutions for you to be ... What are the Army Structured Self-Development Level 2 ... Sep 29, 2023 — You can find the answers to the Army Structured Self Development Level 1 Module 2 exam on a number of websites, as well as the book where the ... SSD 4 Module 1 Test Questions & Answers | 50 ... 4. Exam (elaborations) - Ssd 4 module 3 test questions & answers | 150 questions with 100% correct answers | v... 5. Exam (elaborations) ... IT Essentials 8 Module 1 Quiz Answers: Introduction to ... Dec 25, 2022 — IT Essentials 8.0 Module 1.4.1.2 Introduction to Personal Computer Hardware Quiz answers. 1. Which three devices are considered output devices? More Than a Carpenter by Josh McDowell Josh McDowell's timeless examination of the true nature of Christ and his impact on our lives is one of the best-selling Christian books ever. Written by a ... More Than a Carpenter From the Publisher. The true story of Jesus and his sacrifice on the cross can change your life forever ... More Than a Carpenter Jun 1, 2009 — "more than a carpenter" is a small and inexpensive book and gives proof of the resurrection of Jesus Christ. the arthur josh mcdowell was an ... More Than a Carpenter Former skeptic Josh McDowell's timeless examination of the true nature of Christ and His impact on our lives is one of the best-selling Christian books ever. More Than a Carpenter Quotes by Josh McDowell 25 quotes from More Than a Carpenter: 'Christianity is not a religion. Religion is humans trying to work their way to God through good works. Christianit... Has anyone here read the book "more than a carpenter"? i read the book several years ago and i am currently considering reading it again. i consider myself a christian on the fence and i remember ... More Than a Carpenter by Josh McDowell Read 886 reviews from the world's largest community for readers. With almost ten million copies in print, More Than a Carpenter continues to be the most po... More Than a Carpenter The inspirational classic, "More than a Carpenter, " is now updated for a new generation of seekers with a fresh look, revised material, and a new chapter ... More Than a Carpenter: Josh

McDowell, Sean ... This book offers a short & concise series of well documented arguments in support of the Christian faith. It also encapsulates the current secular arguments ... Citaro: Variants The term “low entry” says it all: From the front end right back to the centre entrance, buses in this category are genuine low-floor vehicles that are built as ... Citaro Ü The Citaro covers every requirement in interurban transportation. From solo coach to articulated bus, from consistent low-floor design to Low Entry variants: ... Mercedes-Benz Citaro O530 LE diesel: low entry solo bus, length 12m, 2 axles, horizontal engine, 2 or 3 doors (the 3rd door is only available as single door); O530 LE Hybrid: low ... Ebook free Mercedes citaro low entry (2023) - resp.app Apr 17, 2023 — Right here, we have countless book mercedes citaro low entry and collections to check out. We additionally meet the expense of variant types ... Free reading Mercedes citaro low entry [PDF] ? resp.app Jan 13, 2023 — Yeah, reviewing a ebook mercedes citaro low entry could be credited with your close friends listings. This is just one of the solutions for ... Setra: The new family of low-entry buses Jul 10, 2023 — The joint umbrella brand for the group's buses (Mercedes and Setra) was found to be “EvoBus” (“Evo” as in Evolution.) And currently the name “ ... Citaro City Buses ... Mercedes- Benz Citaro. A vehicle that has revolutionised ... The Citaro is now available as a rigid bus, articulated bus and low-entry variant, with differing. Premiere: customer takes delivery of first ... Apr 17, 2013 — Low Entry: passenger-friendly and economical As the term “Low Entry” suggests, these buses feature a low-floor design from the front section up ... The Citaro interurban buses. - BUILDERSBUSES Low-Entry: Passenger-friendly and efficient. Low entry means: from the front end right back to the centre entrance, buses in this category are genuine low ...